

Sheffield Wind Residential Proximity Map Scale 1:42,000

Topographic relief map surrounding Sheffield Wind showing proximity of E911 residences and seasonal homes within one and a half miles of the Project.

Legend

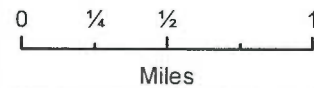
- Turbine Locations
- E911 Residences, VCGI
- E911 Seasonal Homes, VCGI
- DPS Complainants
- 1/2 Mile Radius
- 1 Mile Radius
- 1 1/2 Mile Radius

E911 Residences near the Project:
 30 within 1.5 miles
 6 within 1 mile
 0 within 0.5 mile

E911 Seasonal Homes near the Project:
 24 within 1.5 miles
 13 within 1 mile
 2 within 0.5 mile

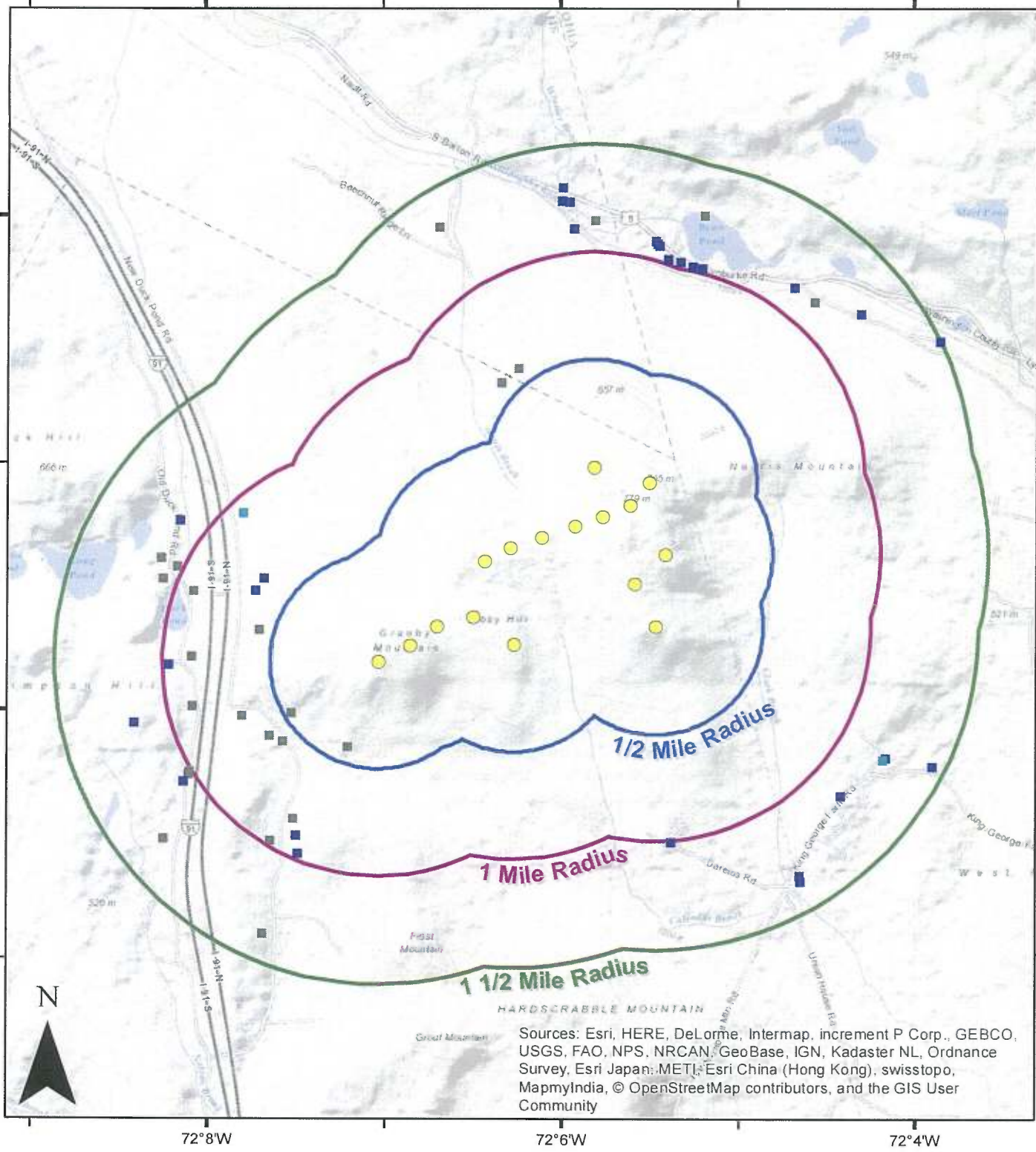
DPS recorded 110 complaints through 11/30/2015.
 4 Complainants:
 1 on New Duck Pond Road
 1 on Queen Elizabeth Farm Lane

Mapped VCGI E911 residences within 1.5 miles of the Project include "Site Types" listed as "Mobile Home", "Other Residential", and "Single Family Dwelling". Mapped E911 seasonal homes within 1.5 miles of the Project include "Site Types" listed as "Camp". E911 data last updated on July 5, 2015.



Data sources: The underlying USGS relief map and E911 data are provided by VCGI at VCGI.vermont.gov. Project data are provided by Sheffield Wind LLC.

Prepared: 20160404rd Revised: 20160414rd









Sources: Esri, HERE, DeLorme, Intermap, increment P Corp., GEBCO, USGS, FAO, NPS, NRCAN, GeoBase, IGN, Kadaster NL, Ordnance Survey, Esri Japan: METI, Esri China (Hong Kong), swisstopo, MapmyIndia, © OpenStreetMap contributors, and the GIS User Community

Georgia Mountain Community Wind Residential Proximity Map

Scale 1:36,000

Topographic relief map surrounding Georgia Mountain Community Wind showing proximity of E911 residences within one and one half miles of the Project.

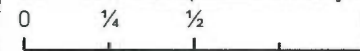
Legend

-  Turbine Locations, GMCW
-  DPS Complainants
-  E911 Residences, VCGI
-  1/2 Mile Radius
-  1 Mile Radius
-  1 1/2 Mile Radius

E911 Residences near the Project:
 164 within 1.5 miles
 103 within 1 mile
 0 within 0.5 mile

DPS recorded 77 complaints through 11/30/2015.
 4 Complainants:
 2 on Georgia Mountain Road
 1 on Ted Road (non-sound related)
 1 on Reynolds Road (2.2 miles south)

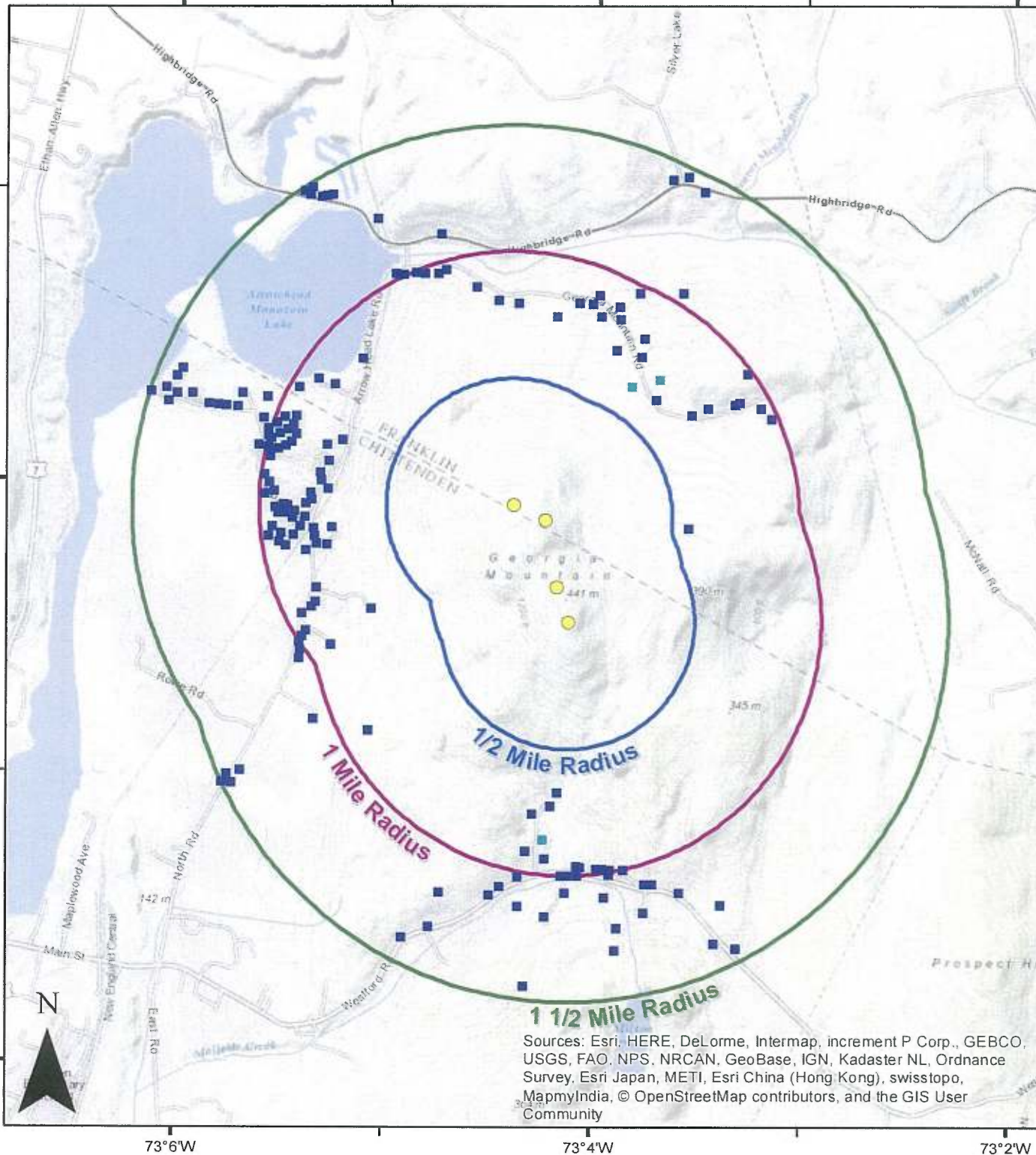
Mapped VCGI E911 residences within 1.5 miles of the Project include "Site Types" listed as "Mobile Home" and "Single Family Dwelling". E911 data last updated on July 5, 2015.



Miles

Data sources: The underlying USGS relief map and E911 data are provided by VCGI at VCGI.vermont.gov. Project data are provided by Georgia Mountain Community Wind LLC.

Prepared: 20160404rd Revised: 20160414rd



Sources: Esri, HERE, DeLorme, Intermap, increment P Corp., GEBCO, USGS, FAO, NPS, NRCAN, GeoBase, IGN, Kadaster NL, Ordnance Survey, Esri Japan, METI, Esri China (Hong Kong), swisstopo, MapmyIndia, © OpenStreetMap contributors, and the GIS User Community

44°40'N

44°38'N

73°6'W

73°4'W

73°2'W